



EnzaPro[®]

An optimized combination
of premium xylanase and
multi-strain DFMs uniquely
designed to support
productivity and wellness

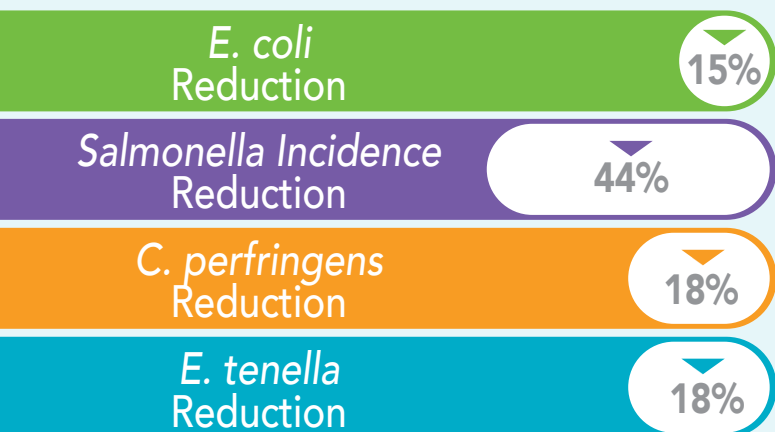


EnzaPro consistently limits the growth of pathogenic microorganisms and is comparable or superior to antibiotics and anti-coccidials

EnzaPro Significantly Reduces Pathogens Titers in the Gut and the Environment

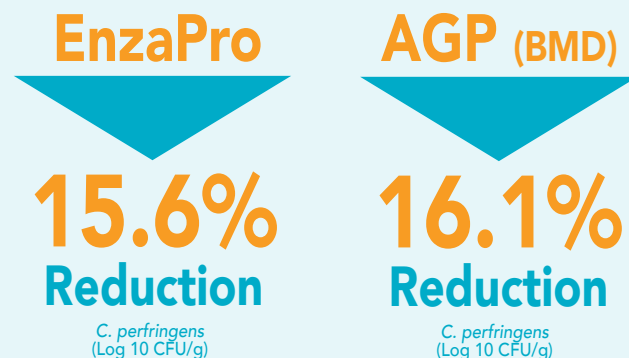
EnzaPro®

Reduces Intestinal Pathogen Load



EnzaPro®

Reduces Environmental Pathogen Load



Zone of Inhibition

Pathogen strain

EnzaPro®

EnzaPro effectively inhibits *Salmonella*

EnzaPro effectively inhibits *E. coli*

Zone of Inhibition




EnzaPro consistently limits the growth of pathogenic microorganisms and is comparable or superior to antibiotics and anti-coccidials.

Specifications



- **Xylanase activity** $\geq 100,000$ XU/g Endo-1,4- β xylanase
- **Multiple *Bacillus* species** $\geq 1 \times 10^9$ CFU/g
- **Thermostable Components**
- **Suitable for use in all diet types**

Application Strategy Through All Phases of Growth *

Poultry		100 g/MT
Swine		100 - 300 g/MT
Aqua		100 - 200 g/MT

*Consult with a nutritionist.

Storage/Shelf Life

A minimum shelf life of 24 months from date of manufacture when product is stored in original sealed bag under dry, cool conditions.

Recommended storage of $< 30^{\circ}\text{C}$. Keep opened bags rolled down tightly to maintain freshness.



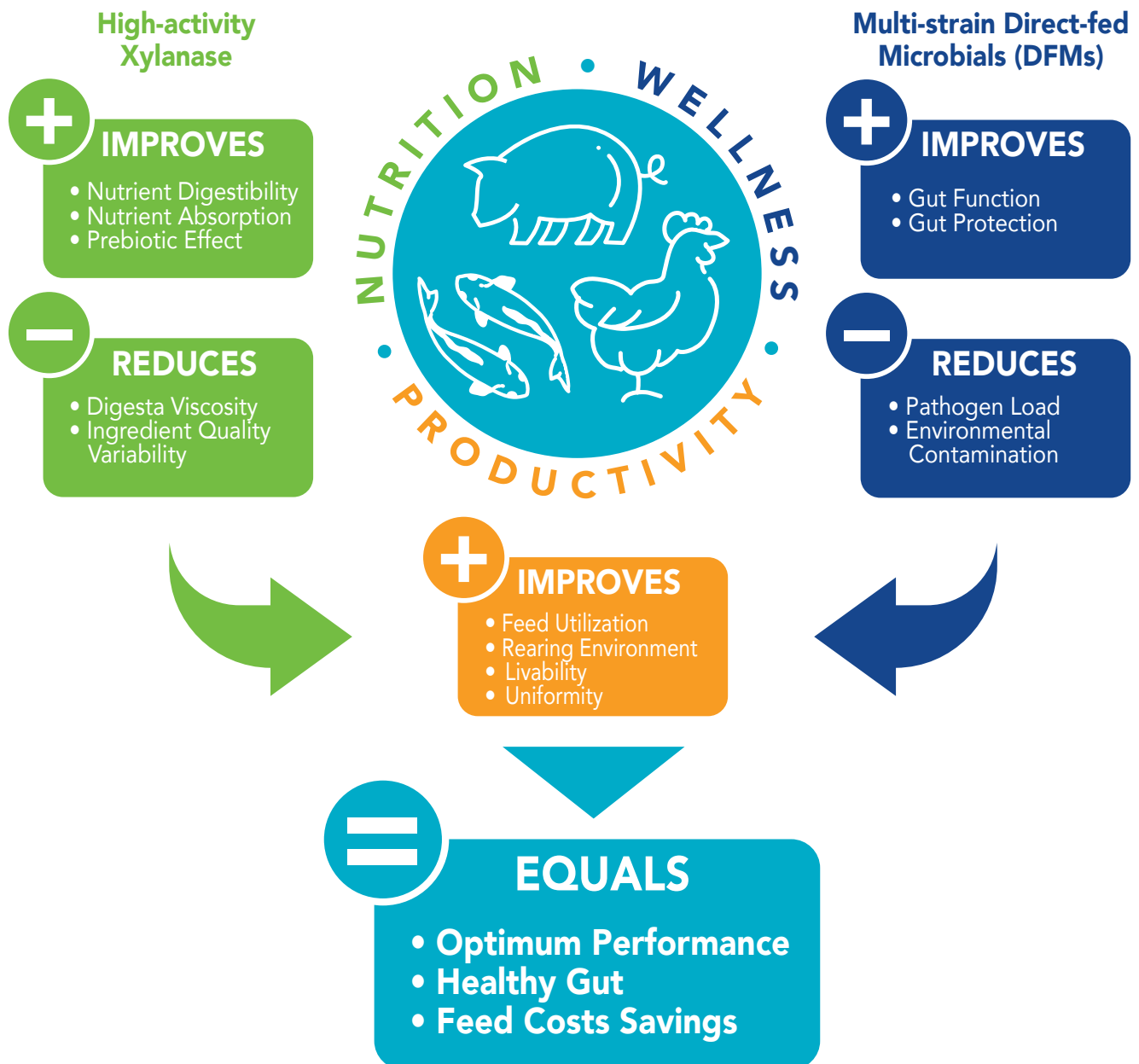
4222 Emperor Blvd, Suite 460, Durham, NC USA 27703
+1-919-993-3389 • sales@BRIworldwide.com • www.BRIworldwide.com

Copyright© 2020 BioResource International, Inc. or its affiliates, all rights reserved. The BRI logo and all products denoted with ® or ™ are registered trademarks or trademarks of BioResource International, Inc. or its affiliates. Information regarding the legal status of this product may be obtained on request. The information contained in this publication is based on our own research and development work, or work conducted by third parties, and to our knowledge is reliable. Always read the label and product information before use. Users should conduct their own tests to determine the suitability of our products for their specific purposes. Statements contained in this publication should not be considered as, and do not constitute a warranty of any kind, expressed or implied, and no liability is accepted for the infringement or misuse of any patents, or other intellectual property of third parties.

EnzaPro[®]

Premium Xylanase and Multi-strain Direct-fed Microbials

A Novel Combination





Premium Xylanase Optimized for Strong Activity

The premium GH11 xylanase present in EnzaPro is a high-efficiency, thermostable, unique xylanase that targets both soluble and insoluble xylans found in grain feed ingredients.

EnzaPro®



GH10 Xylanases

- Digest soluble xylans
- Effective in wheat diets
- **Not effective in corn diets**



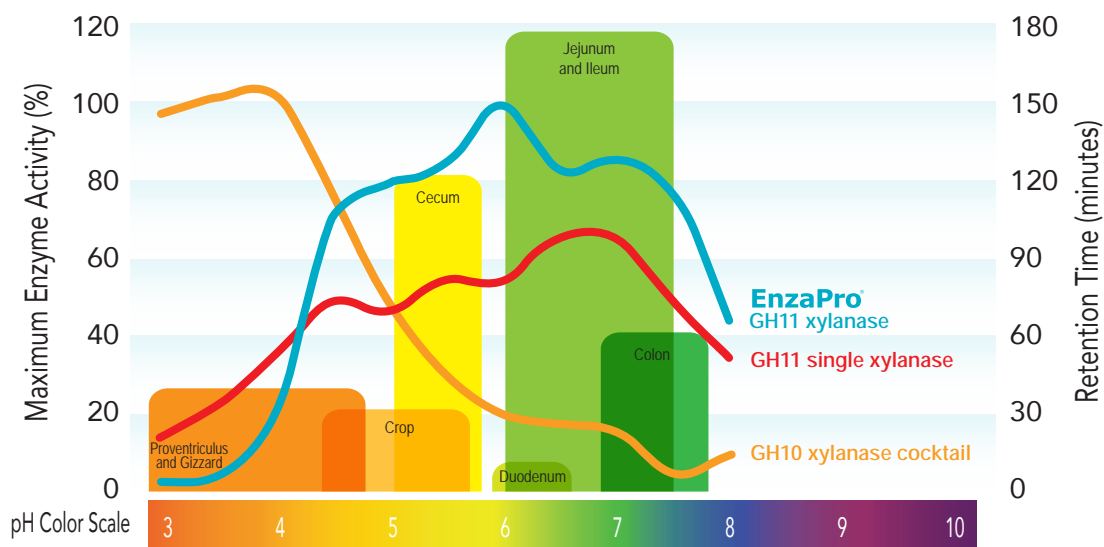
GH11 Xylanases

- Digest both soluble and insoluble xylans
- **Effective in both corn and wheat diets**



Specialized GH11 Xylanase

- Digests both soluble and insoluble xylans
- Effective in both corn and wheat diets
- **Improved stability**
- **More efficient activity**



EnzaPro's premium GH11 xylanase generates the highest enzyme activity with the longest retention time under optimum pH.

40.6-43.0°C

EnzaPro's xylanase is designed to have optimum activities at the animal's physiological temperature.

EnzaPro harnesses the power of high-activity xylanase and direct-fed microbials and is specifically designed to help improve performance and support a healthy gut

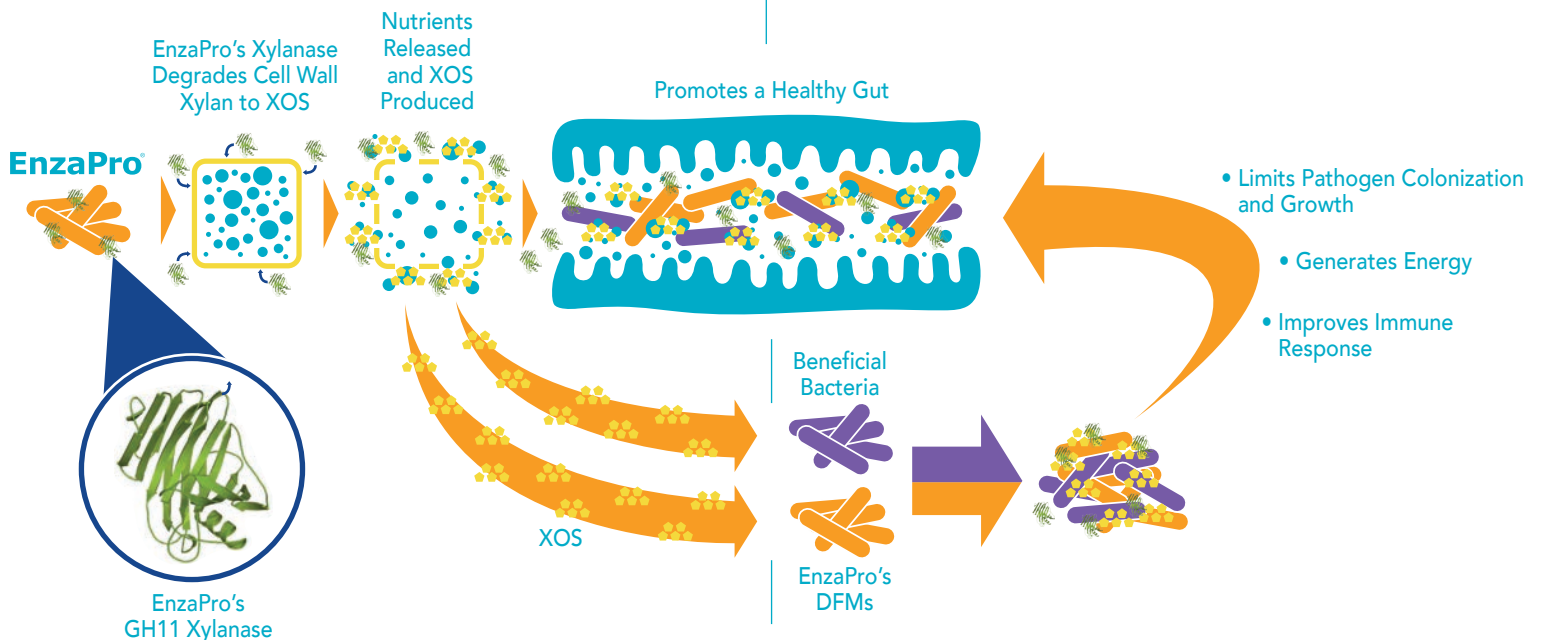
Uniquely Selected for Prebiotic and Probiotic Actions

Prebiotic action

The xylo-oligosaccharides (XOS) produced by the action of EnzaPro's specialized GH11 xylanase promote growth of beneficial bacteria in the gastrointestinal tract and results in more available energy and overall improved digestibility of nutrients.

Probiotic action

EnzaPro's multi-strain DFMs also benefit from the prebiotic effect of xylanase and can exclude and inhibit pathogens in the gut, promote a strong and rapid immune response in the animal, and protect the animal's ability to absorb and utilize nutrients.



Significantly Improves Livability and Uniformity

EnzaPro addresses dietary and disease challenges to significantly improve production-scale livability and reduce animal-to-animal, flock-to-flock and site-to-site variation.

42% Mortality Reduction

From 8.60% to 4.96%

34% Variation Decrease

From 15.9% to 10.5%