



# EnzaPro<sup>TM</sup>

An optimized combination  
of premium xylanase and  
multi-strain DFMs uniquely  
designed to support  
productivity and wellness





EnzaPro consistently limits the growth of pathogenic microorganisms and is comparable or superior to antibiotics and anti-coccidials

## EnzaPro Significantly Reduces Pathogens Titers in the Gut and the Environment

### EnzaPro™

Reduces Intestinal Pathogen Load

*E. Coli*  
Reduction

15%

*Salmonella* Incidence  
Reduction

44%

*C. Perfringens*  
Reduction

18%

*E. Tenella*  
Reduction

18%

### EnzaPro™

Reduces Environmental Pathogen Load

EnzaPro

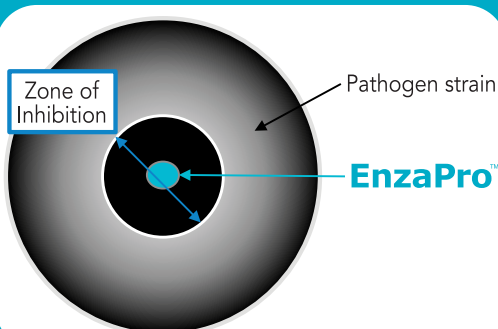
AGP (BMD)

15.6%  
Reduction

*C. Perfringens*  
(Log 10 CFU/g)

16.1%  
Reduction

*C. Perfringens*  
(Log 10 CFU/g)



EnzaPro effectively inhibits *Salmonella*



EnzaPro effectively inhibits *E. coli*



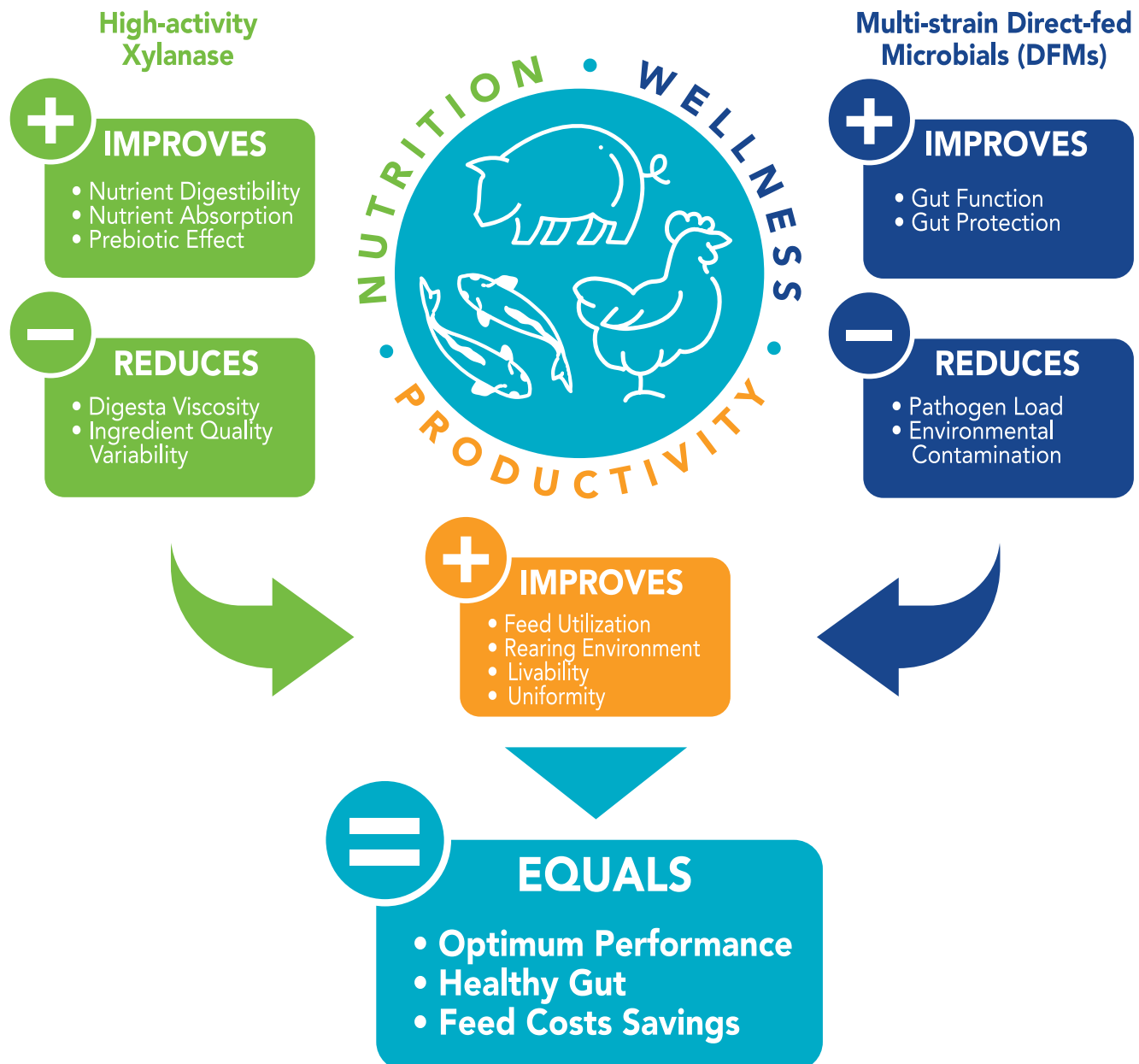
### Zone of Inhibition

EnzaPro consistently limits the growth of pathogenic microorganisms and is comparable or superior to antibiotics and anti-coccidials.

# EnzaPro™

Premium Xylanase and Multi-strain Direct-fed Microbials

## A Novel Combination





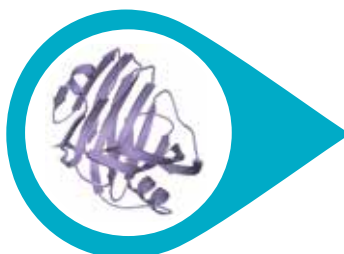
## Premium Xylanase Optimized for Strong Activity

The premium GH11 xylanase present in EnzaPro is a high-efficiency, thermostable, unique xylanase that targets both soluble and insoluble xylans found in grain feed ingredients.



### GH10 Xylanases

- Digest soluble xylans
- Effective in wheat diets
- **Not effective in corn diets**



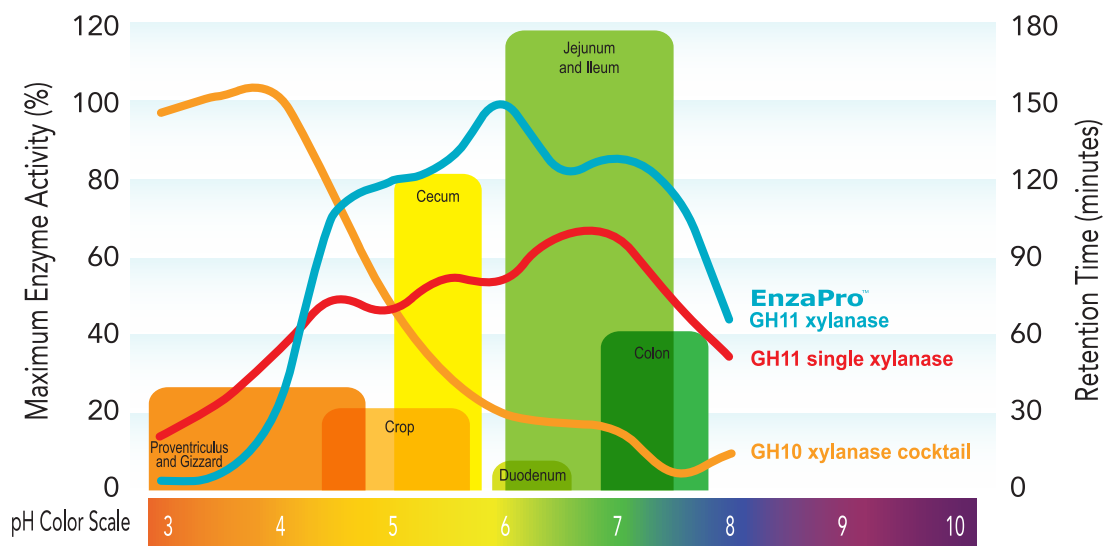
### GH11 Xylanases

- Digest both soluble and insoluble xylans
- **Effective in both corn and wheat diets**



### Specialized GH11 Xylanase

- Digests both soluble and insoluble xylans
- Effective in both corn and wheat diets
- **Improved stability**
- **More efficient activity**



EnzaPro's premium GH11 xylanase generates the highest enzyme activity with the longest retention time under optimum pH.

40.6-43.0°C

EnzaPro's xylanase is designed to have optimum activities at the animal's physiological temperature.

EnzaPro harnesses the power of high-activity xylanase and direct-fed microbials and is specifically designed to help improve performance and support a healthy gut

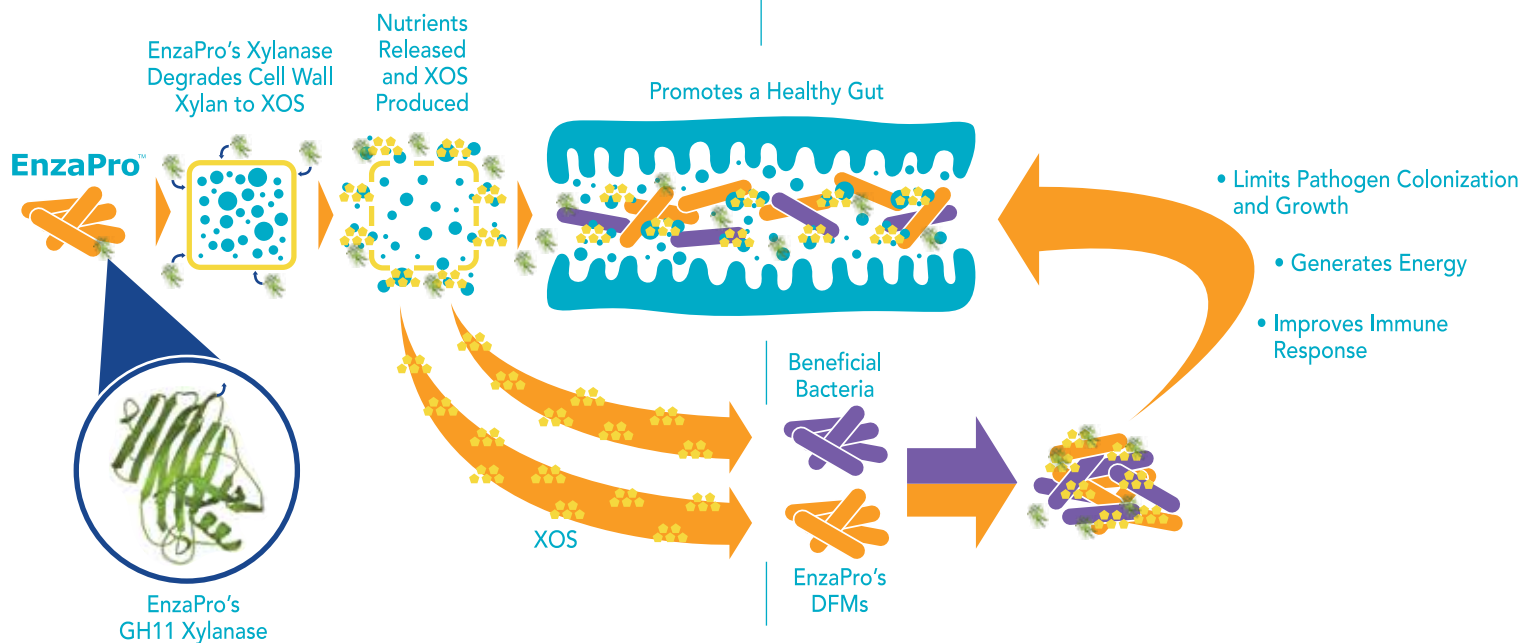
## Uniquely Selected for Prebiotic and Probiotic Actions

### Prebiotic action

The xylo-oligosaccharides (XOS) produced by the action of EnzaPro's specialized GH11 xylanase promote growth of beneficial bacteria in the gastrointestinal tract and results in more available energy and overall improved digestibility of nutrients.

### Probiotic action

EnzaPro's multi-strain DFMs also benefit from the prebiotic effect of xylanase and can exclude and inhibit pathogens in the gut, promote a strong and rapid immune response in the animal, and protect the animal's ability to absorb and utilize nutrients.



## Significantly Improves Livability and Uniformity

EnzaPro addresses dietary and disease challenges to significantly improve production-scale livability and reduce animal-to-animal, flock-to-flock and site-to-site variation.

**42%** Mortality Reduction

From 8.60% to 4.96%

**34%** Variation Decrease




From 15.9% to 10.5%

## Specifications



- **Xylanase activity**  $\geq 100,000$  XU/g Endo-1,4- $\beta$  xylanase
- **Multiple *Bacillus* species**  $\geq 1 \times 10^9$  CFU/g
- **Thermostable Components**
- **Suitable for use in all diet types**

## Application Strategy Through All Phases of Growth\*

<b>Poultry</b>		100 g/MT
<b>Swine</b>		100 - 300 g/MT
<b>Aqua</b>		100 - 200 g/MT

\*Consult with a nutritionist.

## Storage/Shelf Life

A minimum shelf life of 24 months from date of manufacture when product is stored in original sealed bag under dry, cool conditions.

Recommended storage of  $< 30^{\circ}\text{C}$ . Keep opened bags rolled down tightly to maintain freshness.



4222 Emperor Blvd, Suite 460, Durham, NC USA 27703

+1-919-993-3389 • [sales@BRIworldwide.com](mailto:sales@BRIworldwide.com) • [www.BRIworldwide.com](http://www.BRIworldwide.com)